

Elentra User Guide: Adding the Elentra portal to your Home Screen and Activating Auto Sign-In (Apple Device)


Objectives

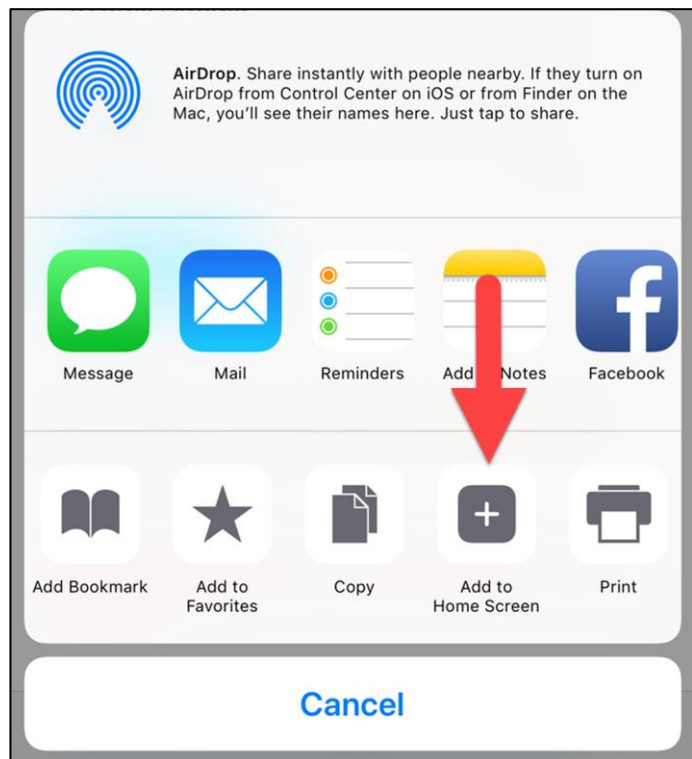
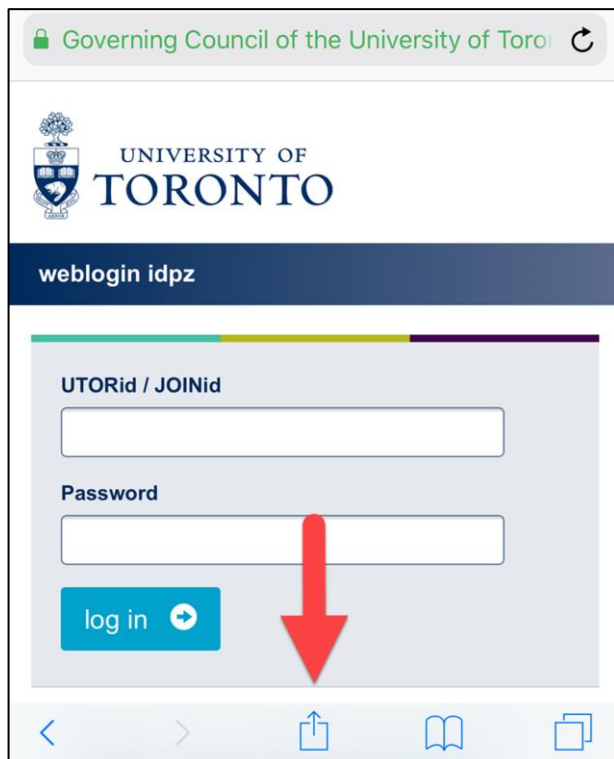
- Learners will be able to access Elentra via the icon on their phone home screen
- Learners will be able save their login credentials and auto sign-in to Elentra

A. Accessing the Elentra Portal from your Home Screen

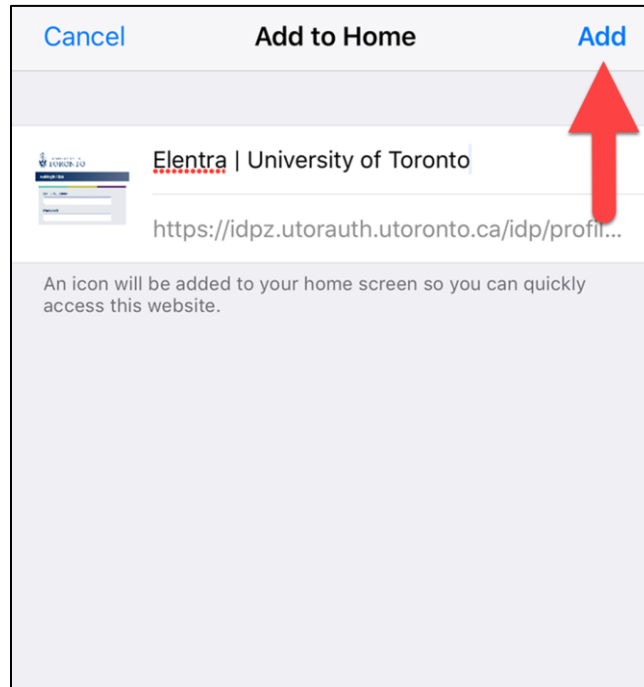
- On your Apple mobile device, go to the **Elentra** website: <https://meded.utoronto.ca/>.

Note: Ensure that you are using Safari as the default browser

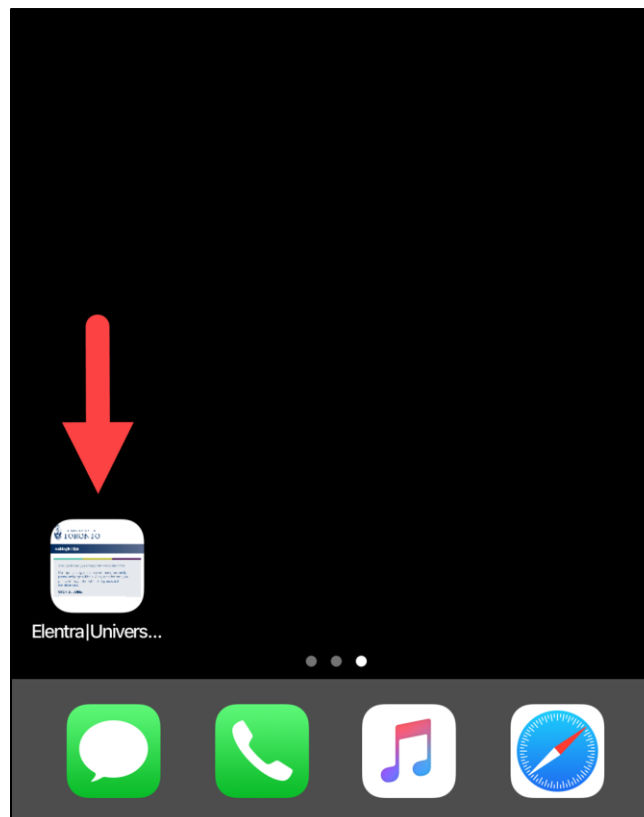
- Click the  symbol located at the bottom of your screen
- Select “Add to Home Screen”



- Rename the icon to “Elentra” (or as preferred) and click the “Add” button

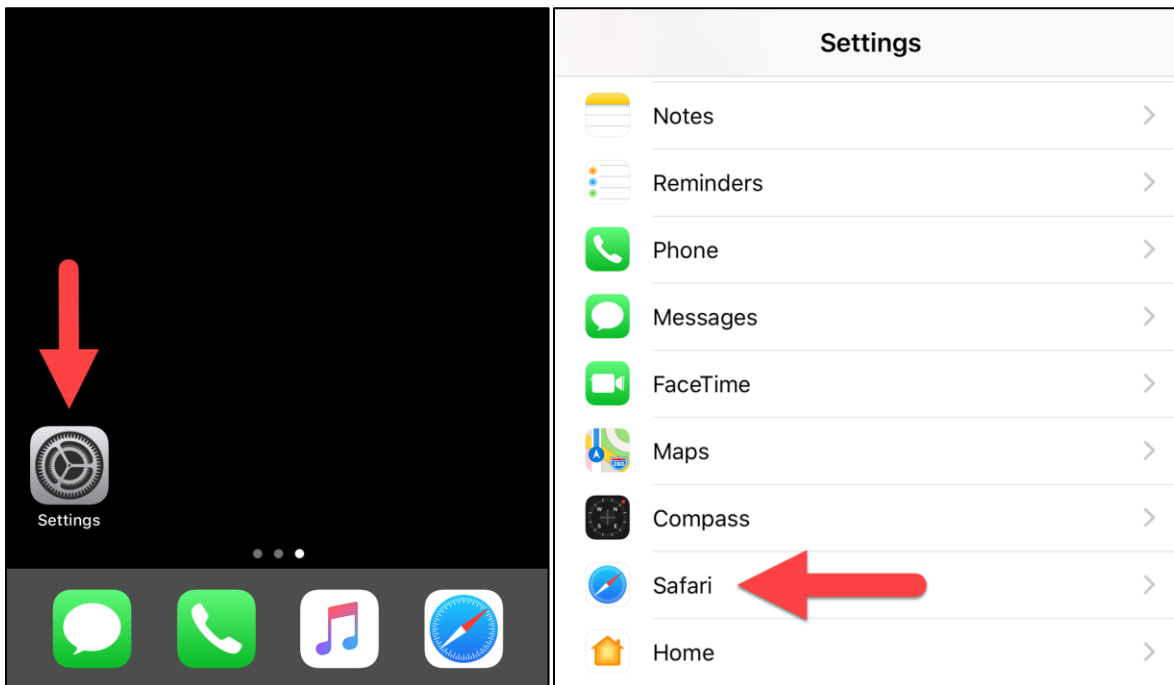


- Click on the newly created “Elentra” icon to access the Elentra website directly from your phone Home Screen

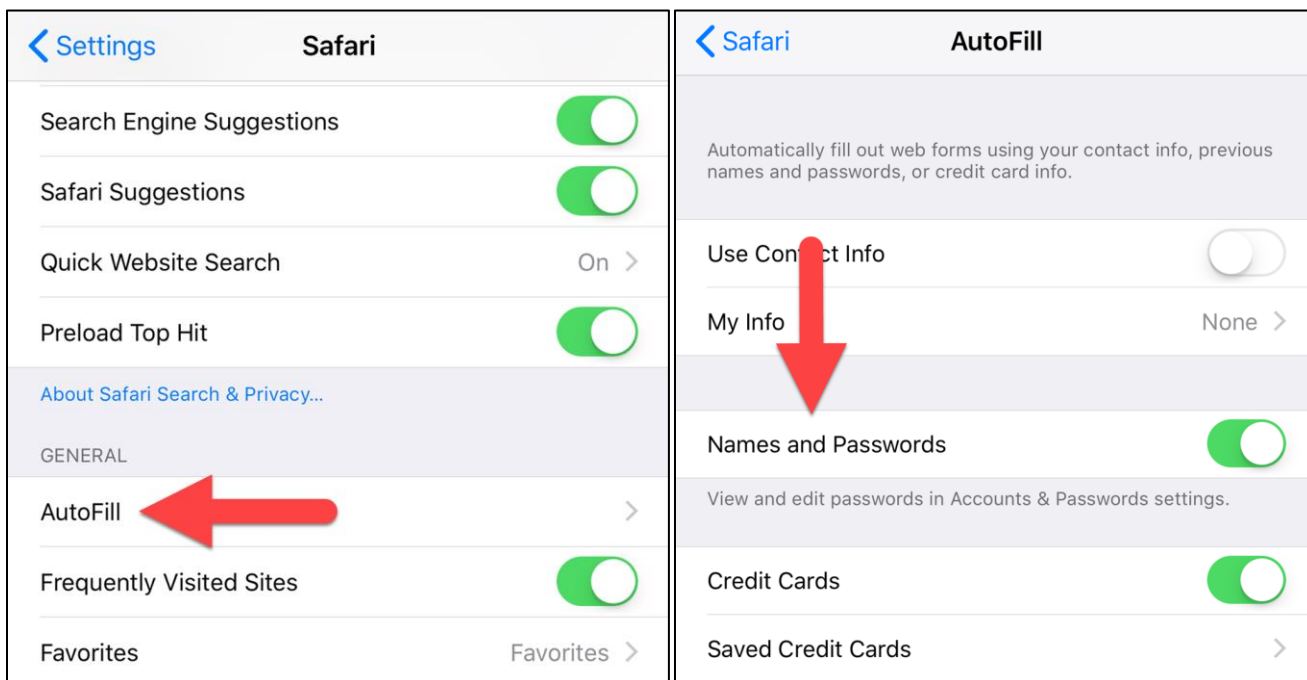


B. Activating Auto Sign-In on your device

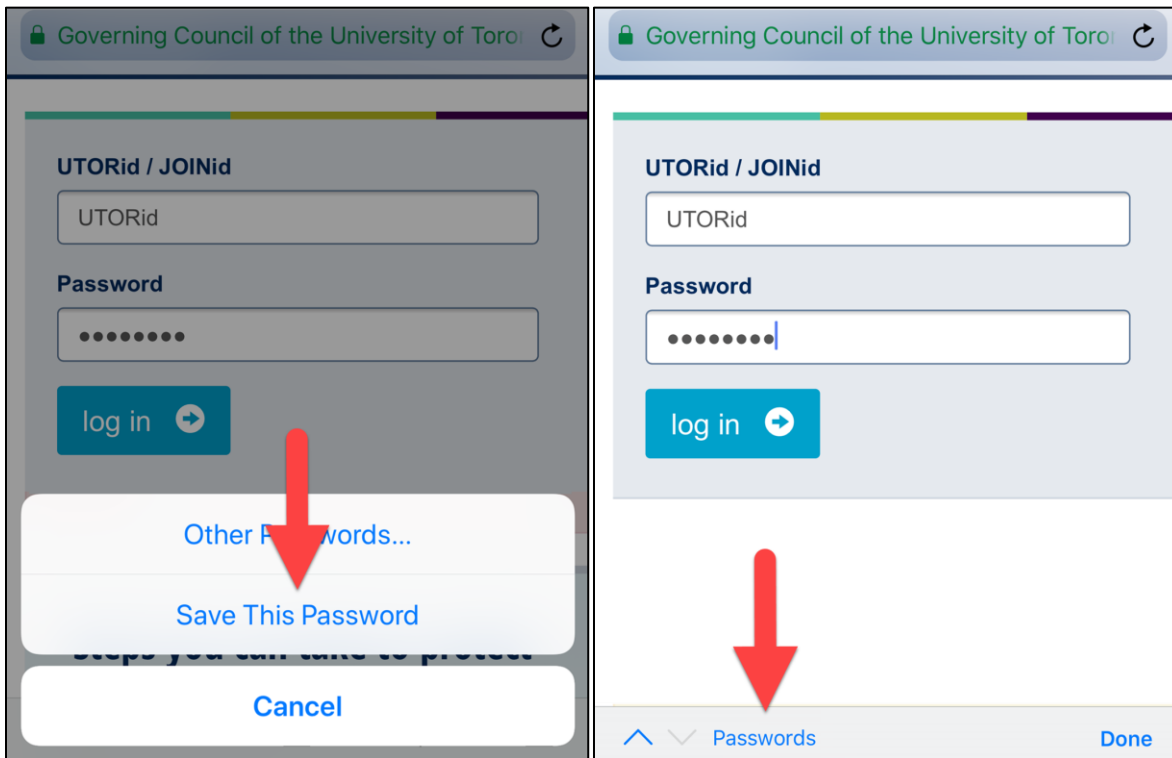
- From your homescreen, and click on the “Settings” app/icon
- Select “Safari”



- Select “AutoFill” under the “General” section
- Ensure that the “Names and Passwords” option is active



- Exit Settings and return to the **Elentra** website: <https://meded.utoronto.ca/>
- After logging in, click on the “Passwords” prompt, and then select “Save This Password”



Elentra Support

If you require assistance, please do not hesitate to contact the Elentra Help Desk at: PGME.MedEdHelp@utoronto.ca